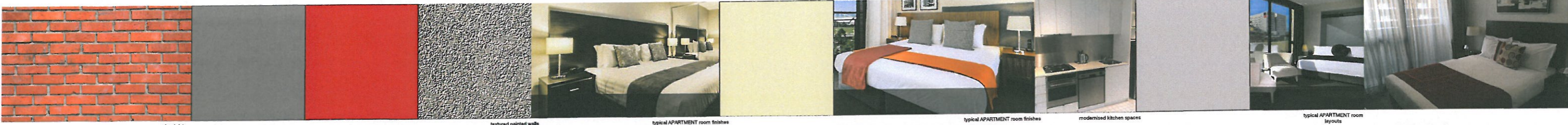


ROOF PLAN - PROPOSED APARTMENT DEVELOPMENT 1:200



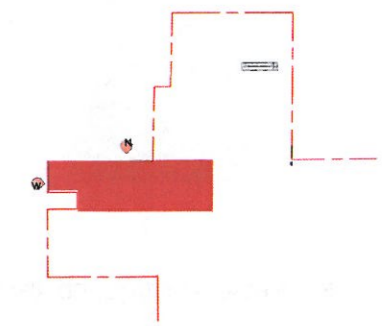
INDICATIVE COLOUR AND MATERIAL PALETTE



NORTH ELEVATION - PROPOSED APARTMENT DEVELOPMENT 1:100



WEST ELEVATION - PROPOSED APARTMENT DEVELOPMENT 1:100



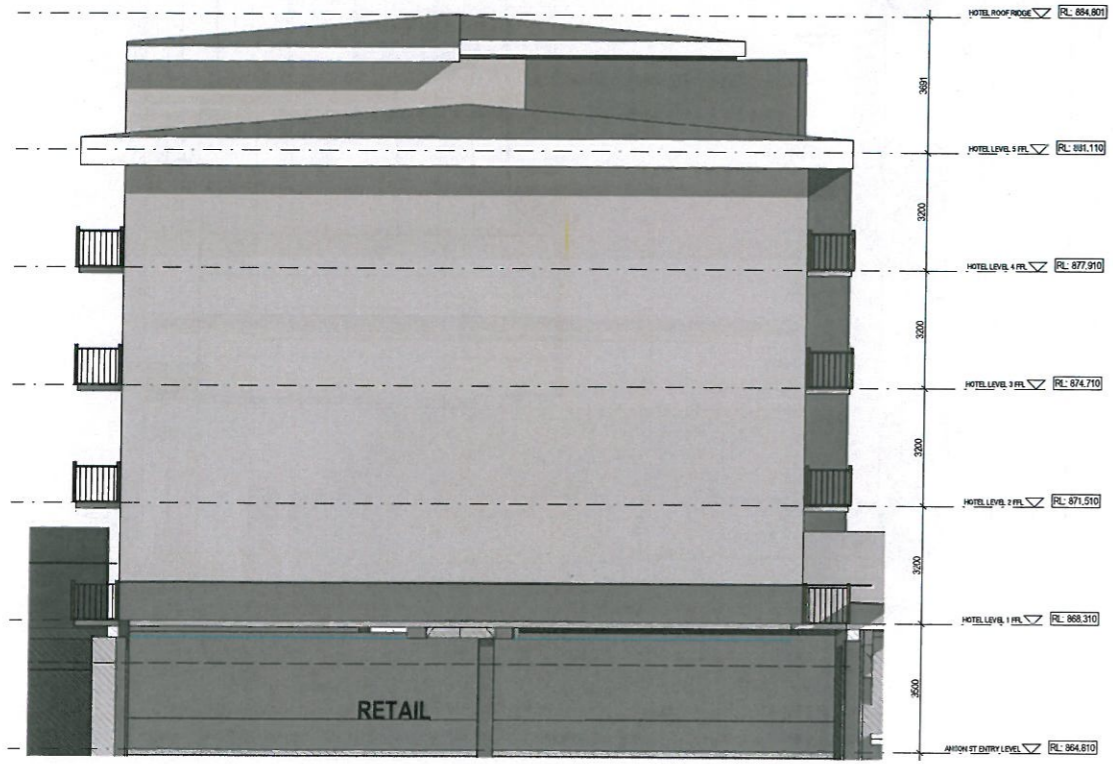
KEY PLAN



INDICATIVE COLOUR AND MATERIAL PALETTE

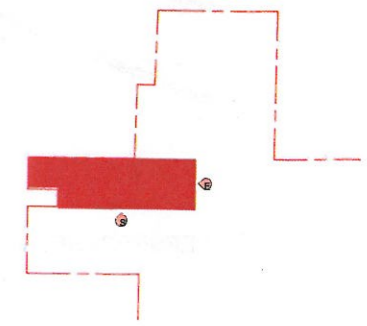


SOUTH ELEVATION - PROPOSED APARTMENT DEVELOPMENT 1:100



EAST ELEVATION - PROPOSED APARTMENT DEVELOPMENT 1:100

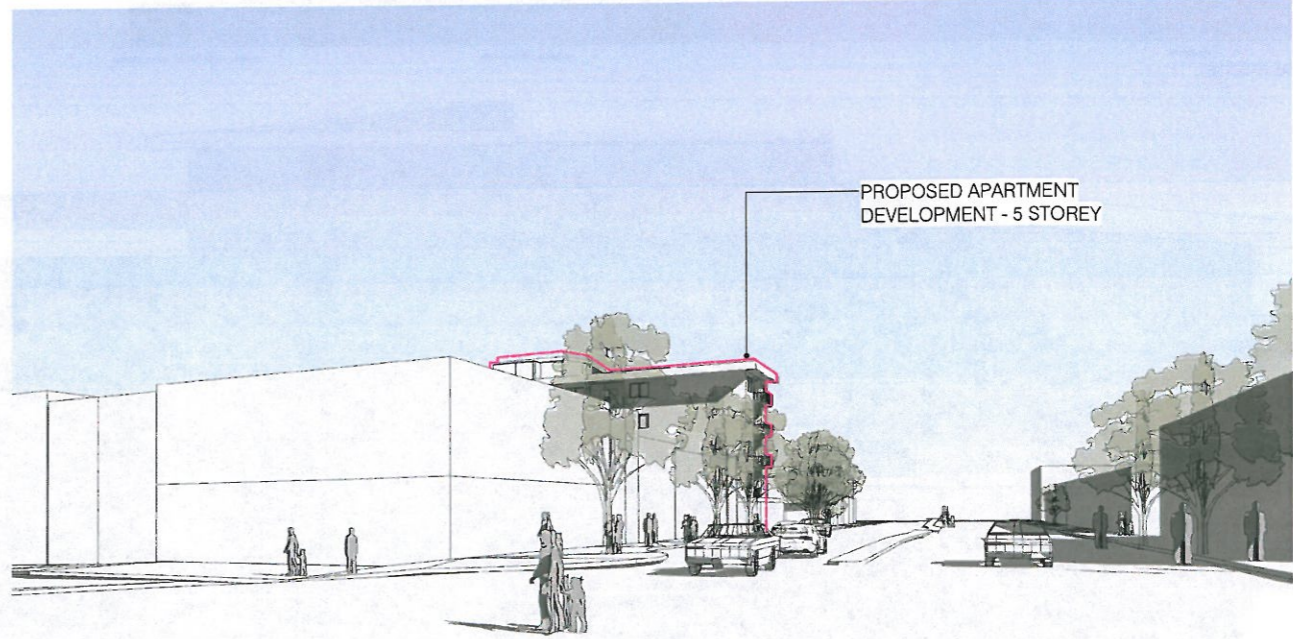
DASHED HATCH INDICATES EXTENT OF NEIGHBOURING BUILDING LINE



KEY PLAN



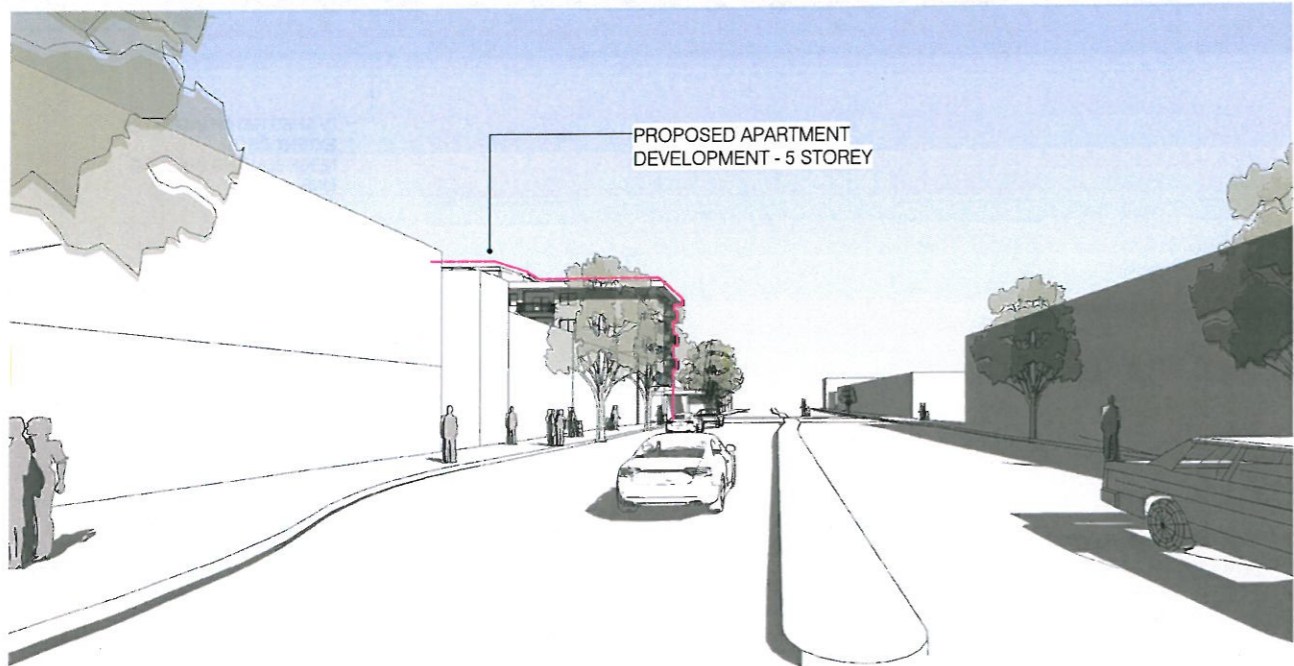
PROPOSED APARTMENT DEVELOPMENT - 5 STOREY



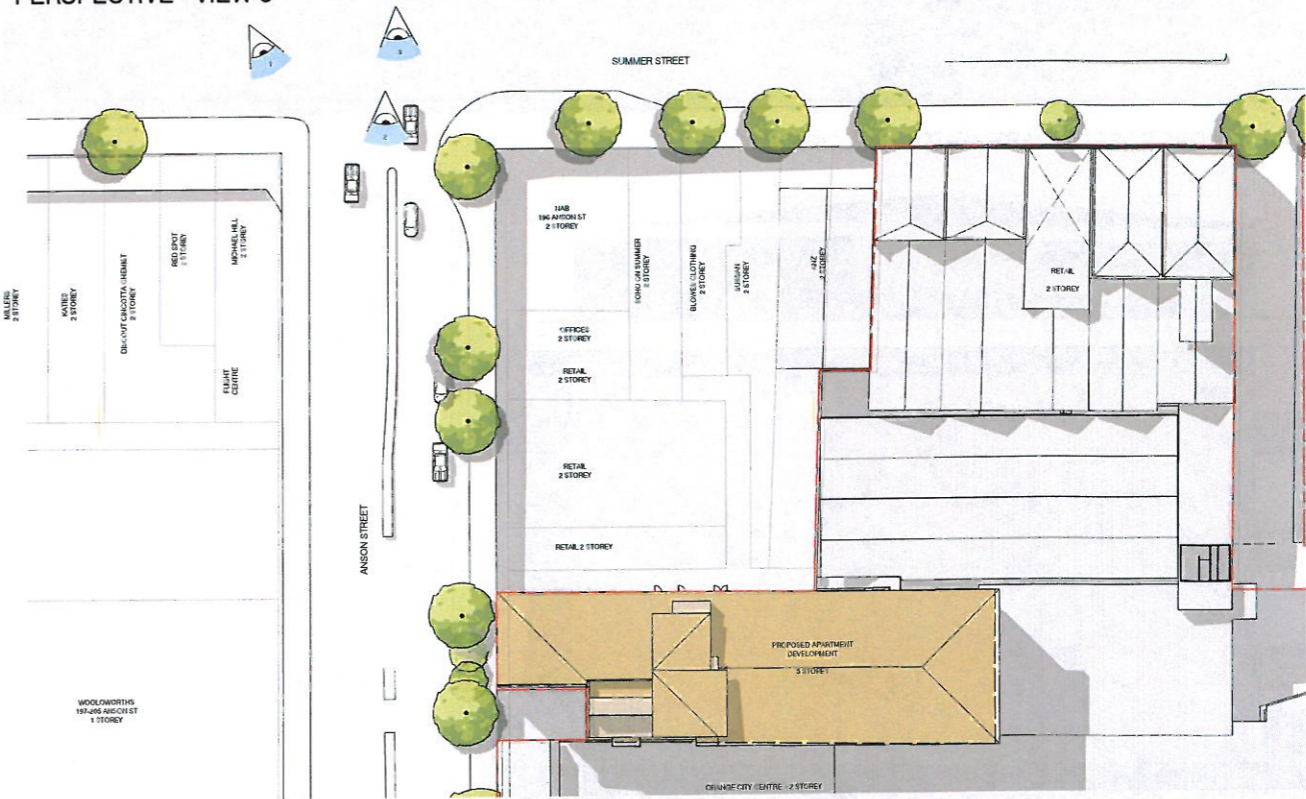
PROPOSED APARTMENT DEVELOPMENT - 5 STOREY

PERSPECTIVE - VIEW 1

PERSPECTIVE - VIEW 3



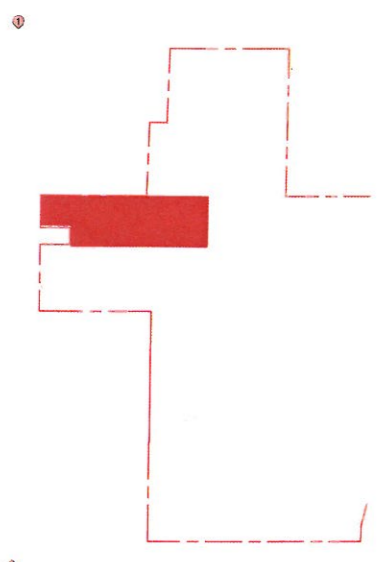
PROPOSED APARTMENT DEVELOPMENT - 5 STOREY



KEY PLAN

PERSPECTIVE - VIEW 2

PLANNING PROPOSAL ISSUE



KEY PLAN



IMAGE 1 - INDICATIVE VIEW FROM SUMMER STREET TOWARDS ANSON STREET AND PROPOSED APARTMENT DEVELOPMENT



IMAGE 2 - INDICATIVE VIEW FROM KITE STREET TOWARDS ANSON STREET AND PROPOSED APARTMENT DEVELOPMENT

no.	date	ISSUE / revision	by
A	18/11/18	PLANNING PROPOSAL SUBMISSION	RB/TB

Client: CPRAM

Project - address: Orange City Centre
Anson St, Orange NSW 2800

Drawing title: INDICATIVE PHOTOMONTAGES
(SHEET 2 OF 2)

Job no.: 2015-056

Drawing no.: A41	Issue: A
Scale: As indicated	Drawn: RB/TB



MELBOURNE
SYDNEY
PERTH



1800 427 553

9/15/2018 9:32:19 PM

